

Touch-Screen with Integrated IptCompBase® Technology for Airless Testers



Comfortable operation and monitoring of the Airless Systems

Newly presented to K 2001
by the Ipt research & development
department!

- Easy operation and oversight in real time on all test sessions up to 50 test stations
- Graphic display of pressure progression curve
- Most accurate temperature control and fine programming over external temperature controller
- Direct printout of running or terminated test sessions over separate printing unit
- Optional: storage of at least 40 protocol files as well as their export in word processing and calculation worksheet programs
- Optional: Connection to IptDataLogging®



A touch of future: the new operational comfort for Ipt Airless

You will easily manage everything from the screen on front panel

The progressive Ipt Touch Screen version for Airless test systems presents you all functions, from parameter input to monitoring and information on the status of running tests as well as terminated sessions, at one fingertip touch. At the wide flat screen, you can even display the graphic progress of depressure for every individual test.

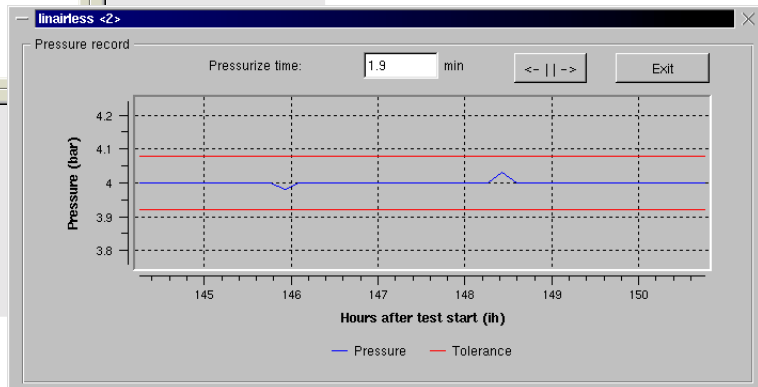
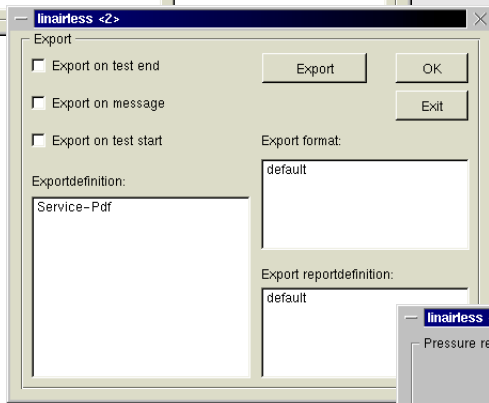
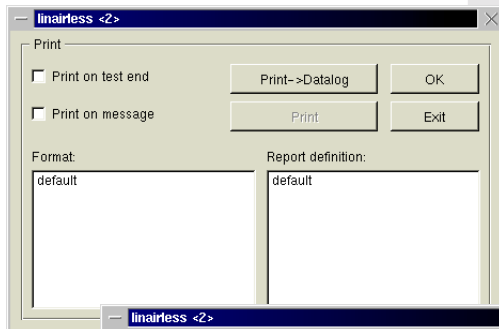
You take advantage of the integrated smart IptCompBase® system

The new IptCompBase® technology makes a powerful stand-alone system out of your airless tester; the simple connection to a printer enables you putting to record ongoing or terminated test progressions. The modular system leaves open any possibility to link your airless system with a network by means of a LAN interface or upgrade it with IptDataLogging® to a database capable top version.

Ipt makes your visions come true in all what is technically and economically feasible!

SPECIFICATIONS

Touch-Screen and IptCompBase®



Control capacity

Up to 50 test terminals
up to 10 test tanks/ovens

Pressure supply

Graphic display

Protocol record

Specific individual layout
over separate printing unit
(Not included in standard deliveries)

Optionals

- Export of word processing and calculation worksheets programs over LAN interface
- Serial port to IptDataLogging®

Connections

Electric circuit

88 - 260 V, 50-60 Hz

Network

Ethernet 10/100 MB

Operating system

Linux embedded (RAM drive)

Weight

approx. 10 kg

QUALITY & SERVICE

Quality control

Units are subject to a rigid quality control with check routine and delivered from the factory completely assembled.

Scope of performance

- Ready-to-operate installation with acceptance at the client's plant (optional)
- Illustrated and clear manual

Service

- Training and instruction
- Maintenance and after-sales service

For a complete range of service work please contact the Ipt Service GmbH
Tel.: + 49 (0) 82 37 / 966 - 450