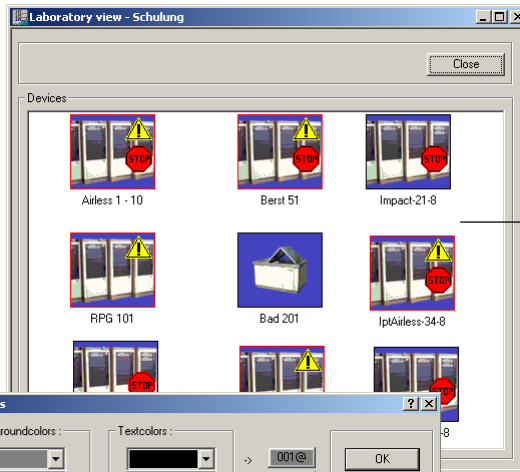


# IptDataLogging®

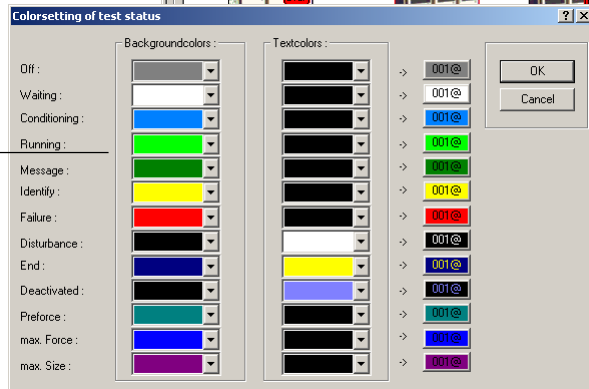
Ipt Quality Control Software Version 4.10



IptData

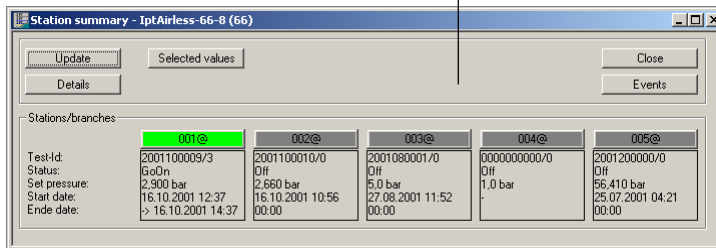


The laboratory summary shows the status of all the connected units at a glance

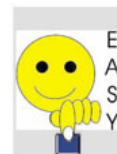


Buttons are characterized by individually definable colours

Important data and the status of all tests on a particular unit are available in the summary



Reports and statistics are prepared for comprehensive evaluation and documentation



## Your test manager controls and registers – day and night

### The PC is your headquarters for all equipment and laboratories

IptDataLogging® enables you to stroll through your laboratories without leaving your desk. You receive information as if you were standing in front of the equipment – by mouse click. You save time and unnecessary “pop-visits” to your laboratory. Even when you are travelling you can keep in touch with your laboratory from your laptop via modem. Laboratories at different locations can be controlled from a central point.

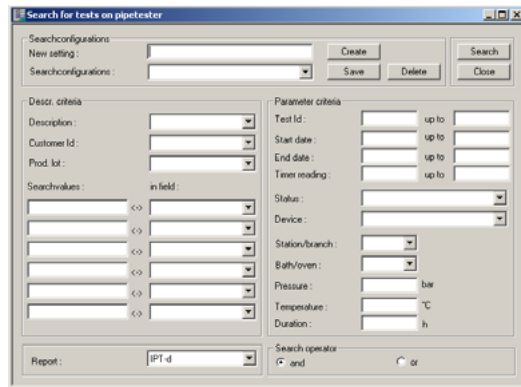
### Economic advantages of evaluation

IptDataLogging® evaluates all events and results. In this manner you are informed about all important facts concerning the quality of your products and materials and are able to react fast. You can use the data for economic calculations and, for example, analyse the actual time and costs for particular tests and test equipment.

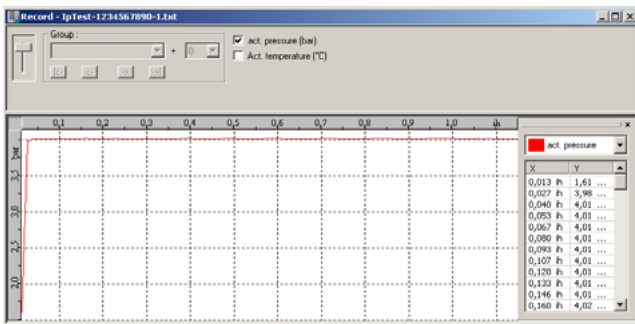
ipt

# More transparency with IptDataLogging®

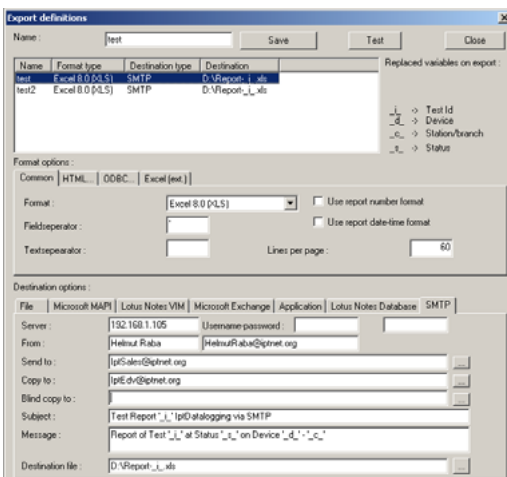
All test data remain available for future evaluations. A variety of search functions enable an exact selection of tests according to individual characteristics.



With IptDataLogging® you can present more than figures: clear graphic evidence of the quality of your products.



Fast export to other systems or reports to e-mail addresses (automatically)



## Setting the parameters, IptDataLogging® takes care of the rest

Starting a new test using IptDataLogging® is fast and simple. You determine the parameters, describe the sample and the minimum aim (and have already completed part of the documentation) and send these data to the appropriate test unit. For safety reasons, tests are always started on the test equipment, not from a PC. From this point on IptDataLogging® watches over your test. Failure, successful completion, unplanned occurrences – the software alerts you when you are needed.

## Precise definition of tasks

IptDataLogging® guides the operator step by step through each application. Whether you are performing long-term hydrostatic or temperature cycling tests, the software offers the right screen. Only when all data have been entered IptDataLogging® will give you the go-ahead for starting the test. This guarantees that all necessary data are included and nothing is forgotten.

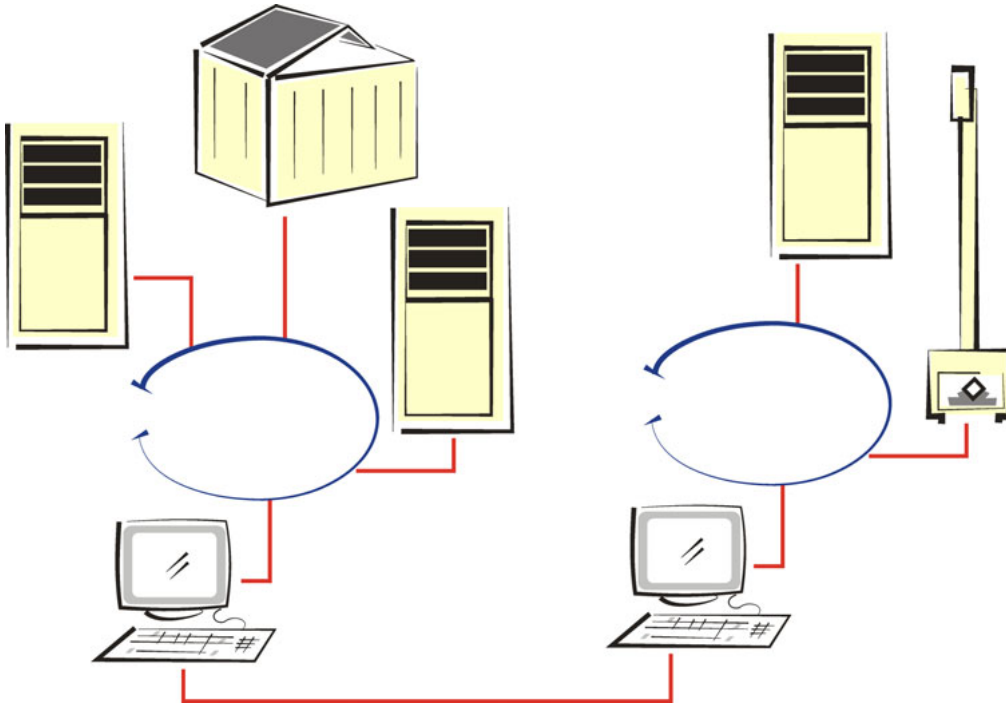
## Getting familiar with IptDataLogging®

You will quickly get used to working with IptDataLogging®. The control over your tests and securing of data systematizes test procedures. Copying or inserting existing data simplifies operation.

The layout of test reports can be designed according to your own requirements. IptDataLogging® software is available in many languages and therefore allows you to issue reports in the language of your choice.

## Soon you will not want to be without:

- Fast test set-up
- The security of automatic plausibility test of entered data
- Complete test reports
- Reliable filing and evaluation of data
- Extensive export possibilities
- Flexible printer selection
- Send e-mails directly from Ipt-equipment – automatically
- Access to data from different work stations
- Professional presentation of results
- Clear statistics about the utilization of your laboratories

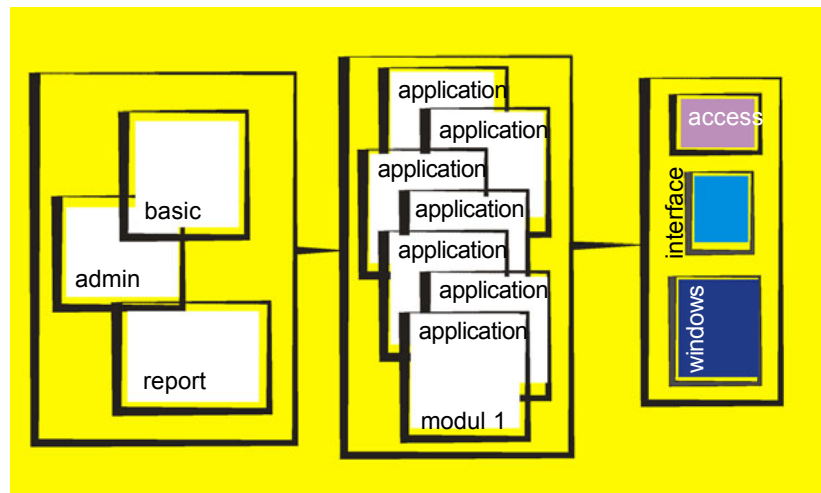


IptDataLogging® will become the center of motion in your laboratory. A professional network for test equipment and work stations.

A variety of equipment can be integrated into the laboratory network. With IptDataLogging® you make the right contacts!

The modular, interactive structure of IptDataLogging® offers a variety of possibilities, depending upon your requirements. You can determine to which extent you would like to be supported by Ipt's quality control software.

IptDataLogging® is based on the latest Windows Standards. Data can easily be exported to other programs such as Excel, Powerpoint or Access and utilized for further assessments.



IptDataLogging® is the key to on-line service of your test equipment.

The software package includes a module for on-line service. What does this mean to you as a user? Assume that you have difficulties with your software or test equipment. Ipt's service staff can offer fast assistance via modem and the remote service software. Faults can be detected and eliminated. Software updates are forwarded "free-house". It's inspiring – ask IptDataLogging® users!

The remote service software also offers you the advantage that you can keep an eye on your laboratory either when you are travelling or from your home office. You are in control, in whichever continent you may be.

The future starts now. We will help to realize your visions.

„Your statement of quality“:  
A clear standing, with IptDataLogging®

## SYSTEM DATA

## Prerequisites



<b>Computer</b>	PC Intel® Pentium™, min. 166 MHz
<b>RAM</b>	minimum 64 MB RAM
<b>Hard disc</b>	> 1.2 GB
<b>Graphic card</b>	> 2 MB (min. 256 colours, resolution: 1024 x 786)
<b>Monitor</b>	17" with 1024 x 768 at 75 Hz
<b>Operating system</b>	Microsoft Windows NT Workstation 4.0 or Windows 2000
<b>Drives</b>	■ CD-ROM ■ Zip-Drive 100 MB internal oder external
<b>Remote service</b>	■ analogue or digital modem (depending upon type of connection) ■ pcAnywhere 32 V 8.0 Host (included in the scope of delivery)

## QUALITY & SERVICE

<b>Training</b>	Ipt offers customer-orientated training packages, exactly tailored to your own requirements. This gives you the possibility to discuss your questions in depth with your Ipt instructor.
<b>Remote service</b>	In "emergencies" you can always make use of our hot-line. The Ipt Service Team is ready to assist you via modem.
<b>After-sales service</b>	Our comprehensive maintenance contracts ensure complete service, including yearly calibration and updates. Ipt Service GmbH will be pleased to inform you about the advantages of their service packages at: + 49 (0) 82 37 / 966 - 450



IPT INSTITUT FÜR PRÜFTECHNIK  
GERÄTEBAU GmbH & Co.KG

Schulstraße 3 D-86447 Todtenweis  
Tel.: + 49 / 82 37 / 9 66 - 0  
Fax: + 49 / 82 37 / 9 66 - 480  
eMail: IptSales@iptnet.org  
<http://www.iptnet.org>

**Professional test procedures require professional equipment.  
Discuss your solutions with your Ipt adviser.**